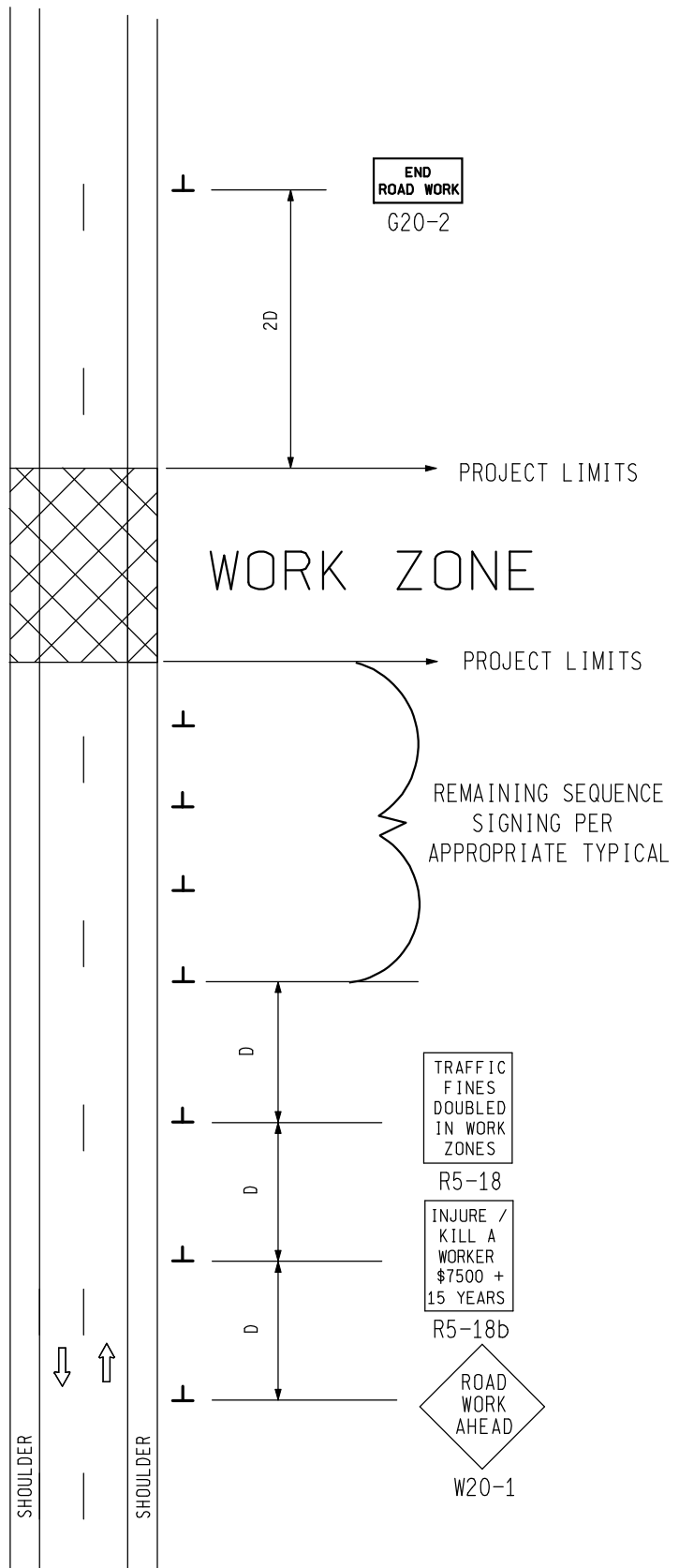
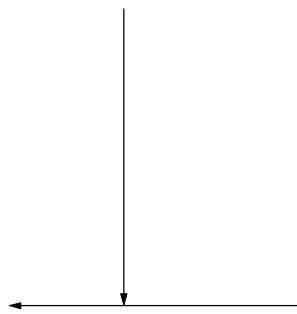


SIGN PLACEMENT  
IS THE SAME FOR  
BOTH DIRECTIONS



SIGN = 48 ft x 2 - TYPE B  
FOR ONE DIRECTION OF TRAFFIC  
W20-1 QUANTITY INCLUDED WITH  
APPROPRIATE TYPICAL FOR  
SEQUENCE SIGNING

**MDOT**  
Michigan Department of Transportation  
TRAFFIC AND SAFETY  
MAINTAINING TRAFFIC  
TYPICAL

TYPICAL ADVANCE SIGNING TREATMENT FOR  
INTERMEDIATE AND SHORT TERM  
STATIONARY WORK ZONE OPERATIONS WHERE  
ALL TRAFFIC CONTROL DEVICES ARE  
REMOVED AT END OF EACH WORK DAY ON  
AN UNDIVIDED TWO-WAY ROADWAY

DRAWN BY: CON:AE:djf  
CHECKED BY: BMM

JUNE 2006  
PLAN DATE:

M0050a

SHEET  
1 OF 2

NOT TO SCALE


## NOTES

30. THE APPROPRIATE ADVANCE SIGNING SEQUENCE(S), (M0030a THROUGH M0080a) SHALL BE USED ON ALL PROJECTS.
35. THESE SIGNS ARE INTENDED TO BE USED WITHIN THE LIMITS OF THE TEMPORARY SEQUENCE SIGNING AS IS SHOWN ON 1 OF 2. THESE SIGNS ARE NOT TO BE INTERMINGLED WITH ANY OTHER TEMPORARY SEQUENCE SIGNING EXCEPT AS SHOWN.

### SIGN SIZES

G20-2	-	48" x 24"
R5-18	-	48" x 60"
R5-18b	-	48" x 60"
W20-1	-	48" x 48"

NOT TO SCALE

 TRAFFIC AND SAFETY <b>MAINTAINING TRAFFIC TYPICAL</b>	<b>TYPICAL ADVANCE SIGNING TREATMENT FOR INTERMEDIATE AND SHORT TERM STATIONARY WORK ZONE OPERATIONS WHERE ALL TRAFFIC CONTROL DEVICES ARE REMOVED AT END OF EACH WORK DAY ON AN UNDIVIDED TWO-WAY ROADWAY</b>		
	DRAWN BY: CON:AE:djf	JUNE 2006	<b>M0050a</b>
CHECKED BY: BMM	PLAN DATE:		
FILE: PW RD/TS/Typicals/Signs/MT NON FWY/M0050a.dgn REV. 08/15/2007			